



THE KING'S HOST, LORD HOWE
Picture by Elliott and Fry

THE KING'S VISIT TO PENN HOUSE,

The Buckinghamshire Seat of
Earl Howe.



PENN HOUSE



THE KING'S HOSTESS, LADY HOWE
Picture by Starling, High Wycombe

On the evening of January 16, the day of the opening of Parliament, King Edward left London for Penn House, Buckinghamshire, the seat of Earl Howe. On Friday the King had an excellent day's sport. His Majesty was accompanied by Earl Howe, Earl de Grey, Viscount Curzon, Lord Herbert Vane-Tempest, the Hon. H. Stonor, Mr. A. Sassoon, and General Sir Stanley Clarke. Game was plentiful and his Majesty was very fortunate in choice of position, securing a number of fine birds. A record bag for the Penn preserves was the result of the day's outing,

Penn Street and Penn, the adjacent hamlets, are in the neighbourhood of Amersham. The famous Quaker, William Penn, the founder of Pennsylvania, does not appear to have been actually connected with these villages, but his resting place may be seen in the graveyard of the little meeting-house at Jordens, two or three miles east of Penn. Penn lies by the side of five of his children and the two Quaker leaders, Isaac Penington and Thomas Ellwood, the friend of Milton, whose cottage is also near by at Chalfont St. Giles. Penn Street stands on very high ground, the top of the church



PRINCE EDWARD OF YORK



PRINCE GEORGE OF YORK



PRINCE HENRY OF YORK



PRINCESS VICTORIA OF YORK

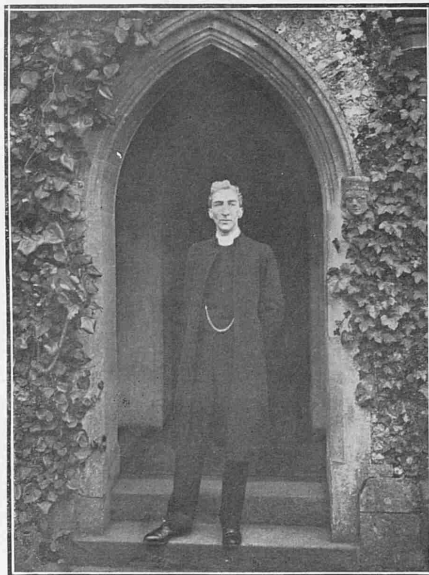
The most recent portraits of King Edward's grandchildren from a set of miniatures by Mrs. Gertrude Massey

Before the Prince of Wales returned from his journey the King commissioned Mrs. Massey to paint these miniatures. The sittings were taken at Osborne, Balmoral, and Marlborough House

1,203 pheasants, twenty partridges, ten hares, and twenty rabbits being brought down. Luncheon was served early in the afternoon in a tent close to Penn Farm, where most of the ladies of the house party joined the shooters. On Sunday his Majesty attended divine service at Penn Street Church with the members of the house party.

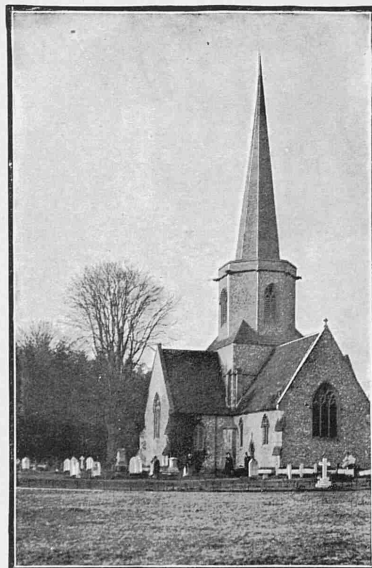
Penn House, Lord Howe's seat, is a comfortable, old-fashioned country house, built long and low in the Tudor fashion. Parts of the house are of recent origin, and the whole establishment is fitted with electric light and a complete warming apparatus.

tower being 600 ft. above sea-level. Windsor Castle is easily seen from the tower. Lord Howe's family were originally Howes. The peerage was created for Sir Scrope Howe in 1701, and the 4th viscount, the great admiral, was advanced to an earldom in 1788. His barony went to his daughter, Sophia, who married the Hon. Penn Curzon, son of the 1st Viscount Curzon. Lord Howe is married to Lady Georgiana Churchill, aunt of the Duke of Marlborough, and has only one child, Viscount Curzon, born in 1884.



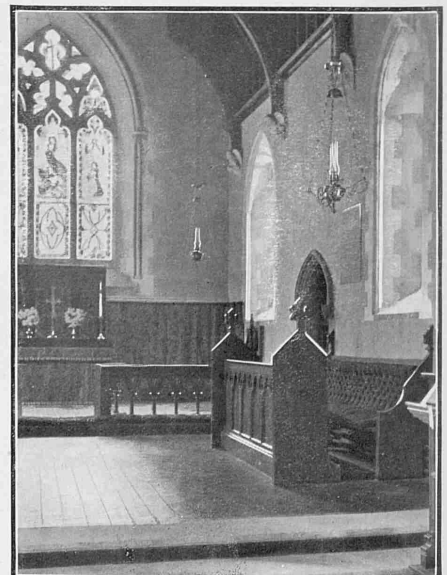
THE VICAR WHO PREACHED BEFORE THE KING

The Rev. Arthur J. Browning has been vicar of Penn Street Church, near Amersham, since 1900. Previously he was curate at Maidenhead and Cookham



WHERE THE KING ATTENDED SERVICE

Penn Street Church stands high, and from its steeple one can look into many counties. There are some fine yew trees in the churchyard



THE SEAT THE KING OCCUPIED

The King sat in the corner of the pew nearest the right-hand side of the picture. The church contains many monuments to the Penn and Curzon families